

# R

# S

# E

# L

# I

# S

# T

# MADISON

HAMBURG



Room category / Size	Rates from	Longstay over 28 days
Studio / 35 m <sup>2</sup> as a double	129,00 149,00	99,00
BusinessStudio / 35 m <sup>2</sup> as a double	159,00 179,00	on request
Loft / 50 m <sup>2</sup> as a double	189,00 209,00	129,00
Suite / 70 m <sup>2</sup> persons	259,00 279,00	179,00
Penthouse »Harbour Light« / 90 m <sup>2</sup>	339,00	219,00
Penthouse »Top of Town« / 110 m <sup>2</sup>	419,00	279,00
Parking	24 hours 1 month	18,00 150,00
Additional bed	per night	20,00
Pets	per night	15,00
Breakfast buffet	per person	16,50

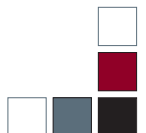
Children under the age of 12 share their parents' room free of charge, if no additional bed is required.  
Check-in after 3 p.m. / Check-out before noon.

We accept: Amexco, Visacard, Mastercard, Diners

All prices are quoted in Euro and include sales tax. Prices are subject to alteration. Stand 08/11

Madison Hotel Hamburg | Schaarsteinweg 4 | 20459 Hamburg

Tel +49 40 37666-0 | Fax +49 40 37666-137 | info@madisonhotel.de | www.madisonhotel.de



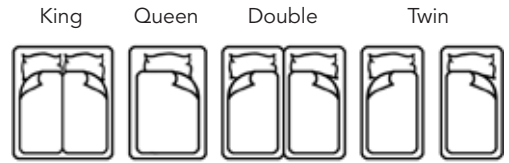
Up to 70 m<sup>2</sup>

MADISON

HAMBURG



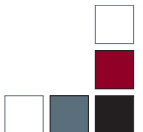
STUDIO 35 m<sup>2</sup>



LOFT 50 m<sup>2</sup>



SUITE 70 m<sup>2</sup>

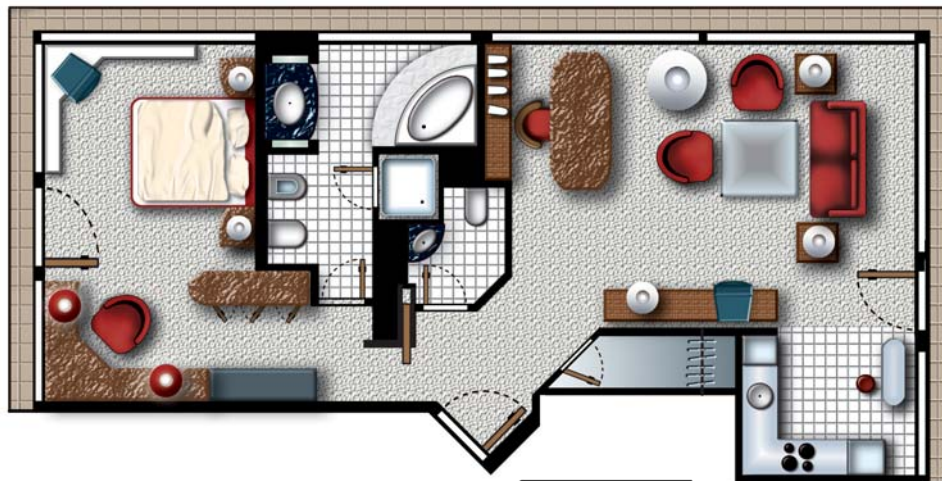


up to 110 m<sup>2</sup>

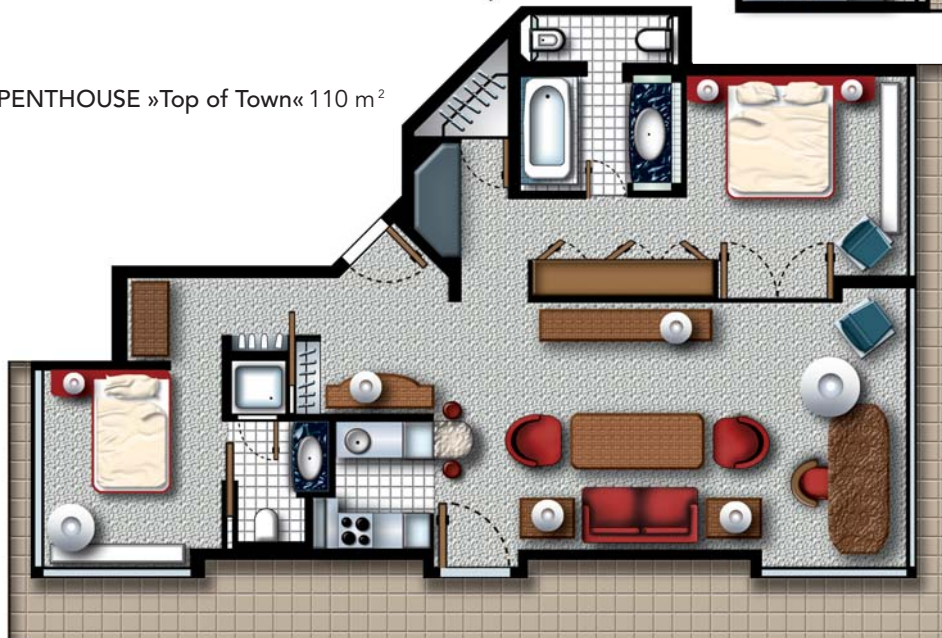
MADISON

HAMBURG

PENTHOUSE »Harbour Light« 90 m<sup>2</sup>



PENTHOUSE »Top of Town« 110 m<sup>2</sup>



Madison Hotel Hamburg | Schaarsteinweg 4 | 20459 Hamburg

Tel +49 40 37666-0 | Fax +49 40 37666-137 | info@madisonhotel.de | www.madisonhotel.de



## MADISON HOTEL HAMBURG

Hostess Marlies Head / »Hotelier des Jahres 1998«. A owner run private hotel.

### Location:

- Centrally located between harbor and city center
- Subway station in direct vicinity
- Harbor and the shopping districts can comfortably be reached on foot

### Service:

- 24 hour reception, concierge service for theater and musical tickets as well as train and rental car arrangements
- Shopping service, shoe polishing machine, ice machine
- Laundry and dry cleaning service, service rooms with washing machine, dryer and iron
- Gastronomy: »Marley's« Restaurant and »Die Bar« both have their own terrace
- 5 variable conference rooms for up to 110 persons
- 8 suites and 2 penthouses for smaller events
- Fitness and wellness oasis MeridianSpa on 3.500 m<sup>2</sup> with spa landscape, Japanese garden, fitness courses and beauty massages.

### Rooms:

- 166 rooms from 35 m<sup>2</sup> to 110 m<sup>2</sup> in five categories
- 2 penthouses, one with large roof-top terrace
- Rooms are adapted to the needs of the handicapped
- Smoker and non-smoker rooms available

### Furnishings:

- Exceptionally large and light rooms
- Air-conditioning individually adjustable, windows to be opened
- Large beds with high-quality »Schramm« mattresses
- Bathrooms with bathtub, plenty of storage space, large sink and mirror, cosmetic mirror, bathrobe and hairdryer
- Working space with large desk, 2 telephones, answering machine, fax connections and Internet access
- Plenty of cupboard space, large suitcase rack and closets
- Safe, safety lock
- »Sky«-TV, stereo system
- Fully equipped kitchenette
- Coffee, tea and hot chocolate for self-preparation